



# SUMMER

NEEDS SUNSCREEN

## & AN ESTATE PLAN

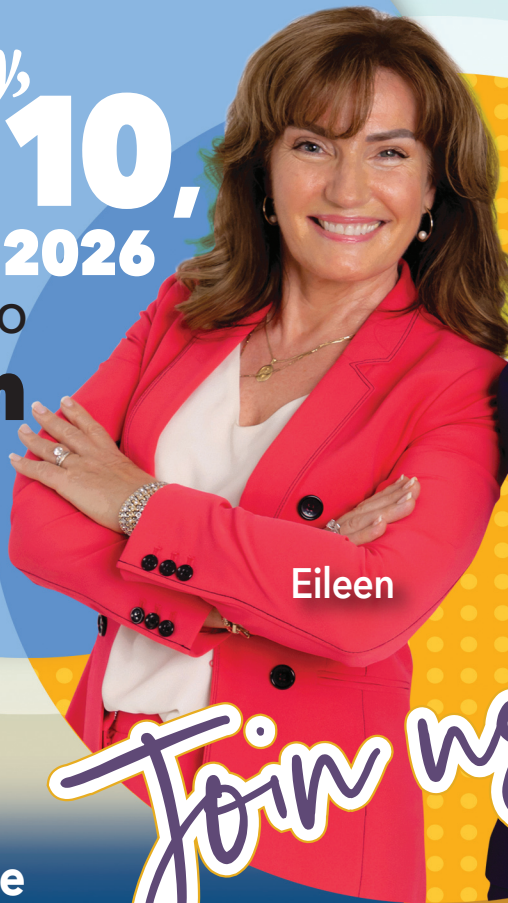
# KW L

## KERLIN WALSH LAW Wills & Trusts

**An Essential 6 Presentation**  
that provides a plan for protecting  
your assets with clarity  
and intention.

Wednesday,  
**June 10,**  
2026

**10:00am TO**  
**11:30am**



Eileen



Samantha

*Join us!*



At:  
**Kerlin Walsh Law Office**  
11757 Southwest Highway  
PALOS HEIGHTS, IL 60463

**PLEASE  
RSVP!** **708.448.5169**

**SCAN OR VISIT:**  
[bit.ly/KWLEssential6-June10](https://bit.ly/KWLEssential6-June10)

*Estate Planning with Warmth & Competence*